

2021 6

2021 4

6

6 60 39
65%

96.5% 100% 23
58.97 % >95% 29
74.35% 27 69.23 %
1

1

				100%		95%	
1		3	86.27	0	0%	3	100%
2		5	97	2	40	1	20
3		12	95.29	6	50	4	33.33

89.94
66.66%

90

26

3

11

1.

6

862

87.21% (5

88.66%)

100%

96

11.14% 5

11.73%

95%~100%

175

20.30% 5

25.77%

80%~95%

419

48.61% 5

47.04%

70%~80%

87

10.09% 5

8.63%

70%

85

9.86% (5

6.83%)

2

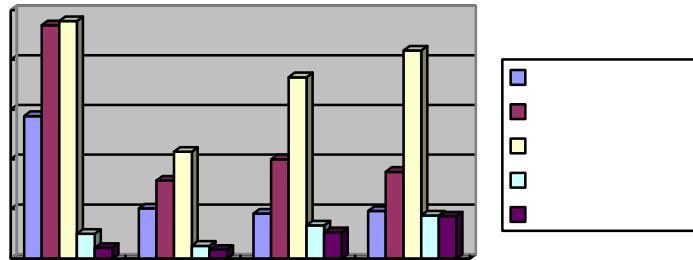
2

	122	82.95%	11	9.02%	14	11.48%	56	45.90%		13.93%	24	19.67%
	90	76.74%	6	6.67%	10	11.11%	33	36.67%	17	18.89%	24	26.67%
	236	89.13%	22	9.32%	54	22.88%	127	53.81%	17	7.20%	16	6.78%

	230	91.06%	31	13.48%		26.09%	113	49.13%	18	7.83%	8	3.48%
	171	90.69%	26	15.20%	36	21.05%	88	51.46%	18	10.53%		1.75%
	13	56.56%	0	0.00%	1	7.69%	2	15.38%	0	0.00%		76.92%
	862	87.29%	96	11.14%	175	20.30%	419	48.61%	87	10.09%	85	9.86%

5

100% 95%~100% 80%~95% 70%



6

3

3

70%~90%



11	2021	6	17	1-2	2002	CAD	53.57%	
12	2021	6	16	5-6	1901		68.00%	
13	2021	6	25	1-2			63.04%	
14	2021	6	1	1-2	1902	RFID	66.67%	
15	2021	6	2	1-2	1903		68.29%	
16	2021	6	9	3-4			36.59%	
17	2021	6	17	1-2		RFID	36.59%	
18	2021	6	9	3-4	1901	RFID	64.10%	
19	2021	6	8	3-4	2002		65.63%	
20	2021	6	10	3-4			65.63%	
21	2021	6	9	3-4	1901		65.00%	
22	2021	6	21	1-2	1901		43.75%	
23	2021	6	3	1-2	1902		58.33%	
24	2021	6	16	5-6	2007 , 2007		41.75%	
25	2021	6	17	1-2	2002		64.58%	
26	2021	6	8	3-4	1902		63.04%	
27	2021	6	10	3-4			63.04%	
28	2021	6	17	1-2			45.65%	
29	2021	6	25	1-2			63.41%	
30	2021	6	25	1-2	1901		66.67%	
31	2021	6	9	3-4	501701		6.25%	
32	2021	6	17	1-2			18.75%	
33	2021	6	9	3-4	13		61.90%	
34	2021	6	2	1-2	3		66.67%	
35	2021	6	1	1-2	39		55.56%	
36	2021	6	9	3-4	4		55.56%	
37	2021	6	9	3-4	44		61.11%	
38	2021	6	3	1-2	49		33.33%	
39	2021	6	17	1-2	49		19.44%	
40	2021	6	8	3-4	50		41.67%	
41	2021	6	10	3-4	50		41.67%	
42	2021	6	9	3-4	9		26.19%	
43	2021	6	1	1-2	1901		41.86%	
44	2021	6	2	1-2			63.64%	
45	2021	6	9	3-4			41.86%	
46	2021	6	16	5-6			62.79%	
47	2021	6	21	1-2			68.18%	

25	1-2	1901		44.68%	
9	3-4	1901	HTML5	68.75%	
9	3-4	1908	HTML5	68.09%	
3	1-2	2002	2	50.00%	
2	1-2	1903		61.90%	
15	5-6	1906		68.29%	
3	1-2	501701		47.92%	
8	3-4			60.42%	
10	3-4			60.42%	
17	1-2			45.83%	
25	1-2			47.92%	
59	3-4	1902		36.73%	

EMC /P <</MCID 207>> BDC q 116.3 615.58 72.7248m -0re W* EMC q /MCID 6 Tf 001141.365925m 0491 r-0.00336 Tc ET Q EMC /P <</MCID 2

20TQ1 0 0 1 0

60 2021 6 2 1-2

76	2021	6	8	3-4	2003		55.10%	
77	2021	6	10	3-4			55.10%	
78	2021	6	25	1-2	2004	2	65.96%	
79	2021	6	2	1-2	1901	vue.js	61.54%	
80	2021	6	9	3-4		vue.js	58.97%	
81	2021	6	25	1-2			53.66%	
82	2021	6	9	3-4	1902	vue.js	69.23%	
83	2021	6	25	1-2	1903	vue.js	67.50%	
84	2021	6	15	5-6	1901		60.71%	
85	2021	6	21	1-2			64.29%	

2.

80%

40

95%

4

5

4

1	2021	6	2	1-2	2003	MySQL		100.00%
2	2021	6	2	1-2	2002			100.00%
3	2021	6	1					

11	2021	6	21	1-2	2002	2			100.00%
12	2021	6	17	1-2	1903	-Java Web			100.00%
13	2021	6	16	5-6	2001	Java			100.00%
14	2021	6	16	5-6	2002	Linux			100.00%
15	2021	6	3	1-2	2003	Linux			100.00%
16	2021	6	3	1-2	2004	Java			95.83%
17	2021	6	9	3-4	2005	2			100.00%
18	2021	6	2	1-2	2001				100.00%
19	2021	6	2	1-2	1901				97.92%
20	2021	6	15	5-6	1902	Java			97.96%
21	2021	6	21	1-2	1905	Java			95.56%
22	2021	6	2	1-2	1907	HTML5			100.00%
23	2021	6	9	3-4	2001	2			100.00%
24	2021	6	3	1-2	2005				100.00%
25	2021	6	17	1-2	2005				95.92%
26	2021	6	2	1-2	1902	4			97.50%
27	2021	6	8	3-4	1902	4			97.50%
28	2021	6	10	3-4	1902	4			97.50%
29	2021	6	17	1-2	2001	2			97.37%
30	2021	6	17	1-2	1903				100.00%
31	2021	6	2	1-2	2003				97.92%
32	2021	6	16	5-6	2003	2			95.83%
33	2021	6	17	1-2	2003	2			97.92%
34	2021	6	21	1-2	1902				100.00%
35	2021	6	17	1-2	1904	UI			100.00%
36	2021	6	2	1-2	2003				100.00%
37	2021	6	9	3-4	2004				95.56%

38	2021 6 16	5-6	2001	Linux			97.14%
39	2021 6 9	3-4	1901				97.78%
40	2021 6 17	1-2	2001				97.78%

5

1		2	5	
2		3	7.5	
3		12	30	
4		11	27.5	
5		12	30	

3.

6 7

6

1	2021 6 17	1-2	2001	2		3 7	100.00%
2	2021 6 1	1-2	1902	RFID		5 4	66.67%
3	2021 6 17	1-2	2001	2		8	91.18%
4	2021 6 1	1-2	2001	2		7 5	93.75%
5	2021 6 16	5-6	2002	CAD		4 7	72.50%
6	2021 6 1	1-2	2001	2		11	86.36%

7	2021	6	1	1-2	1904	Docker		20	86.36%
8	2021	6	1	1-2	1905	Docker		10	72.97%
9	2021	6	9	3-4	501701	Docker		11	84.62%

10 2021 6 1 1-2

33	2021	6	25	1-2	1902			9	75.56%
34	2021	6	15	5-6	2003	2		7	71.43%

7

1					8		23.52		
2					10		29.41		
3					6		17.64		
4					2		5.88		
5					7		20.58		
6					1		2.94%		

1

2

3

86

2021 7 6